



Parkwood Primary School
BYOD iPad
Program Information
for 2024 families





About the BYOD iPad Program

The Bring Your Own Device Program was first implemented at Parkwood Primary School in 2017. The BYOD Program caters for students in Years 4-6 and provides students with enriched and purposeful learning experiences which develop critical and creative thinking. At Parkwood Primary School, students are encouraged to use technology as a means of 'creation, rather than consumption'. Both staff and students engage in acquiring the skills and knowledge to innovate, problem-solve, collaborate, and communicate with others, while navigating the online world safely.

The 1:1 BYOD Program aims to promote both independent and collaborative, flexible learning, allowing students to connect learning at school, with learning at home.

High Quality Teaching and Learning

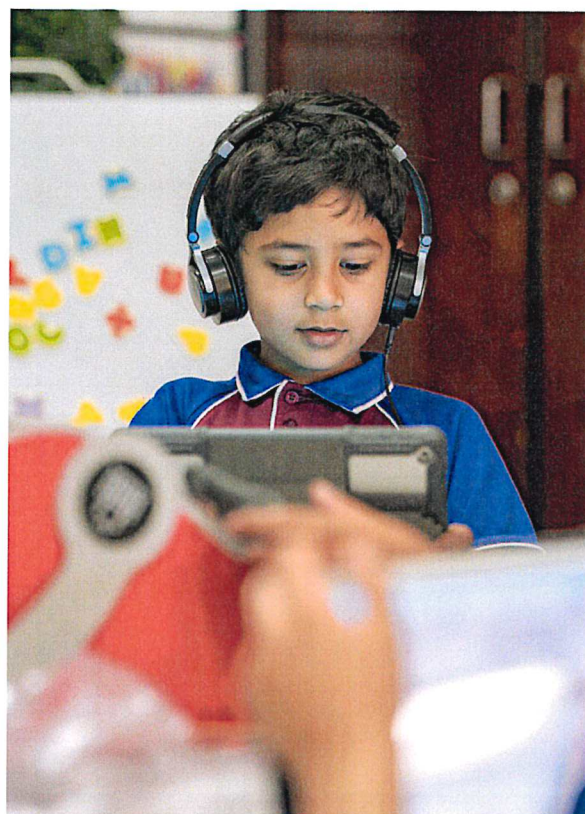
Teachers at Parkwood Primary School are committed to providing students with a well-balanced and rich curriculum. Staff engage in ongoing Professional Learning to ensure they plan for and deliver technology through an integrated approach.

The BYOD iPad Program utilises applications in the Apple Suite for students to communicate and present their ideas and understanding in different ways. Students become 21st Century Learners and are provided with opportunities to record their voice and use videos in learning tasks, going beyond traditional classroom practice.



Parkwood Primary School prioritises both explicit and inquiry-based learning in the classroom. When integrating the use of technology into the curriculum, careful planning has been undertaken to ensure iPad use complements the learning.

Students regularly engage in hands-on learning experiences.



ICT Capabilities

The ICT Capability learning continuum is organised into five interrelated elements:

- Applying social and ethical protocols and practices when using ICT
- Investigating with ICT
- Creating with ICT
- Communicating with ICT
- Managing and operating ICT



Device and Purchase Requirements

School Supplied iPads

The BYOD iPad Program is voluntary, and students will be provided with a shared school device if they are unable to bring their own. It is important to note though, that the school has a limited number of iPads which are accessible to students. When using school supplied iPads, we cannot guarantee that students will always have 1:1 access, and they may need to share devices.

All school supplied devices must remain at school; students are not permitted to take these home.

What iPad Should I Buy?

The following iPads are acceptable in our BYOD Program. However, we would recommend the iPad 9th Gen with WiFi capability only. All iPads must have a minimum storage space of 64GB.

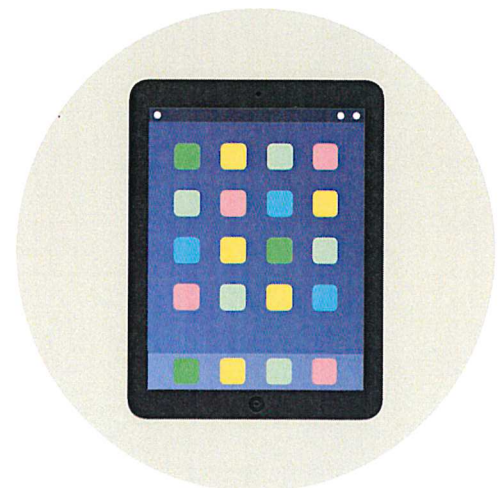
- iPad 10 Gen
- iPad 9th Gen
- iPad 8th Gen
- iPad 7th Gen

All iPads require a case cover which protects both the front and back.

iPad Pros and iPad Minis are not compatible with our school system.

Recommended Accessories

- Headphones
- Screen protector
- iPad keyboard case cover
- Detachable keyboard
- Generic stylus



Apple Care Plus Protection Plan

While your iPad will have one-year limited warranty upon purchase, it is recommended that you purchase the AppleCare Protection Plan. This will extend your warranty and provide you with technical support and hardware coverage.

Find out more: <https://www.apple.com/au/support/products/ipad/>

Insurance

iPads brought to school are not covered by the school or the Department of Education's insurance. Please discuss insurance cover for your child's iPad with your home and content provider.

Purchase from Winthrop Australia

Parkwood Primary School has partnered with Winthrop Australia to offer 1:1 iPad lease or purchase. Winthrop Australia are an Apple Authorised Service Provider with Apple Certified technicians.

While you may choose to purchase your iPad's device from other retailers, Winthrop Australia offers the following benefits:

- 36 month pay by instalments plan through Edstart
- Free shipping with your purchase
- iPad and protective case cover packages
- Access to optional AppleCare+ two year warranty
- Access to optional insurance of two years
- Technical support and service
- School-drop off service: Winthrop will collect your child's device and repair it, free of charge if covered under warranty, or send you a quote to repair it.

Pre-order your child's device through Parkwood Primary School's portal.

<https://sales.winaust.com.au/shop/parkwood>

JAMF MDM Management

Mobile Device Management

In order to protect students while they are on the school's network, we align the students' iPads to the school's JAMF Mobile Device Management Program. The process of joining the MDM Program involves wiping the iPad. For this reason, you need to have a backup of your iPad.

Before you can join the MDM Program



In addition to performing a backup, in 'Settings', you will also need to remove your Passcode, Log out of your Apple ID and ensure that 'Find my iPad' is turned off. If 'Find my iPad' is still turned on, the school's ICT staff will be unable to wipe the iPad and enrol it into the MDM Program.

What to expect when your iPad is returned

The iPad will have been wiped and all apps and data will have been removed as part of the process of enrolling in the MDM Program.

When the iPad is turned on again, you will see the apps installed by Parkwood Primary School.

You may log back into your own Apple ID, and download any of the apps you had previously purchased. Being part of the Parkwood Primary School MDM program allows students to use apps purchased by the school without having to log into any Apple ID.

FAQs

Frequently Asked Questions

1. Can I supply an android/tablet device?

Parkwood Primary School is an Apple Learning school. The use of Apple's operating system provides an autonomous and secure network. The Apple App Store ensures all apps and updates are tested before being released.

Applications in the Apple suite such as Pages, Keynote, Numbers and iMovie provide students the ability to express their ideas and thinking through flexible, creative and innovative ways. Staff and students have access to professional learning through Apple Education and Apple's operating system allows devices to be consistently updated with the same functionalities, regardless of which version of the device your child has.

2. Why is an iPad the preferred device over a laptop?

iPads are the preferred device for a number of reasons:

- iPads have long battery life which means students iPads do not need to be consistently charged during the day,
- iPads are easily transportable for students to take between classes or use when taking photos or videos, functions such as note-taking and drawing can be accessed by students when creating and reading documents,
- the size of an iPad assists students in transporting their device to, and from school, as well minimising desk space so that students can work simultaneously with their iPad and workbooks.

3. How much time will my child spend on their device each day?

There is no set amount of time that students will spend using their devices. The use of the device will depend on the type of activity and tasks students need to complete. Some days your child may not need to use their device if it does not suit the purpose of the learning.

4. How will the iPads be secured at school?

Students are not permitted to use their device on school grounds before school, and during lunch and recess. On arrival, students will bring their device into the classroom and safely store them in their trays. Students will take their device with them to specialist classes if required and when the class is unattended, the classroom will be locked.

5. Who will insure the iPads?

Parents will need to insure their child's device through their personal home and contents insurance. Student devices are not covered by the school, or the Department of Education insurance.

6. What happens if the iPad is damaged or stolen on school premises?

All claims will need to be lodged through personal home and contents insurance.

7. Who will be responsible for charging the iPads?

It is the responsibility of the student to ensure their iPad is charged at home to a minimum of 90%, ready for the following day.

8. What if I don't have an Apple ID?

Apple ID logins can be created for free on the Apple website.

Find out more: <https://support.apple.com/en-au/HT204316>

9. What if my child already has an iPad?

If your family already has an iPad, it may be used in the BYOD iPad Program as long as it meets the minimum device requirement (minimum 64GB storage, iPad 7th Gen, iPad 8th Gen, iPad 9th Gen).

10. What happens if the iPad is not used appropriately at school?

At Parkwood Primary School, students must adhere to the 'Online Service Acceptable Use Agreement'. If the terms and conditions of the agreement are broken, your child may have consequences.

